

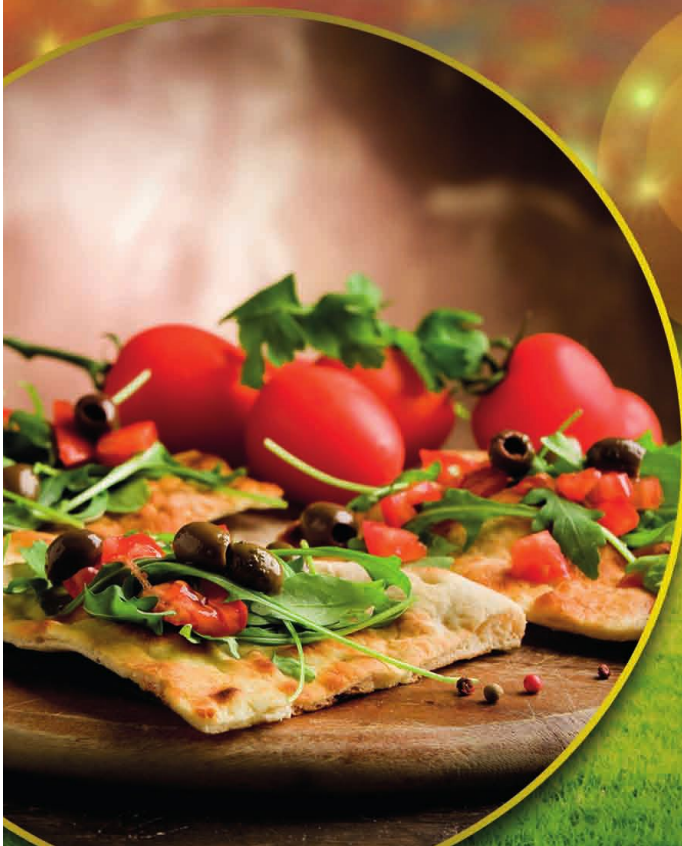


PIZZERIA CORONA

*präsentiert*

Sommer Beiz

# Speisekarte



# Sommer Beiz

<b>Prosecco:</b>	Prosecco		1dl
	Prosecco mit Aperol		1dl
	Hugo		1dl
<b>Aperitif:</b>	Campari	23.0 vol.	4cl
	Martini bianco	15.5 vol.	4cl
	Averna	32.0 vol.	4cl
	Ramazotti	18.0 vol.	4cl
<b>Liqueurs:</b>	Limoncello	16.0 vol.	4cl
	Southern Comfort	35.0 vol.	4cl
	Bailys	18.0 vol.	4cl
<b>Spirits:</b>	Escape 7 Gin	40.0 vol.	4cl
	Vodka Absolut	40.0 vol.	4cl
	Havanna	37.5 vol.	4cl
<b>Whisky:</b>	Jack Daniels	40.0 vol.	4cl
	Ballentines	40.0 vol.	4cl
<b>Long Drinks:</b>	Havanna-Cola		
	Whisky-Cola		
	Vodka-Energy		
	Vodka-Lemon		
	Vodka-Orange		
	Gin-Tonic		
<b>Mineral:</b>	Mineral mit/ohne		5dl
	Coca Cola, Zero		3.3dl
	Sinalco		3.3dl
	Rivella rot		3.3dl
	Elmer Citro		3.3dl
	Apfelschorle Ramseier		3.3dl
	Suure Moscht Ramseier		4.9dl
	Bitter Lemon, Tonic		2dl
	Trojka Energy		2.25dl
<b>Cafe:</b>	Cafe Cream		
	Cafe Zwetschgen		
	Espresso		
<b>Bier:</b>	Herrgöttli		2dl
	Stange Bier		3dl
	Grosses Bier		5dl
	Schneider Weisse		3dl
	Corona		3.3dl
	Somersby		33cl